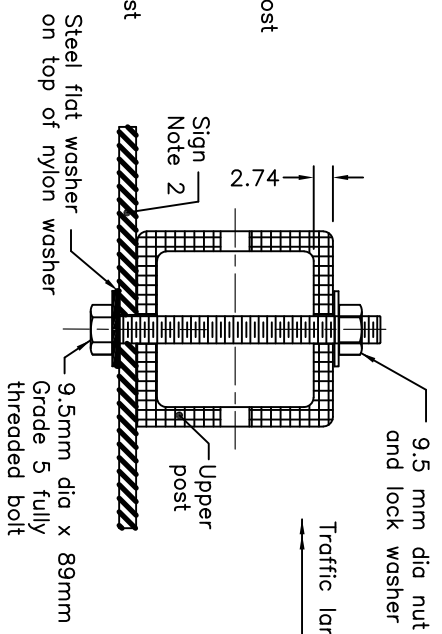
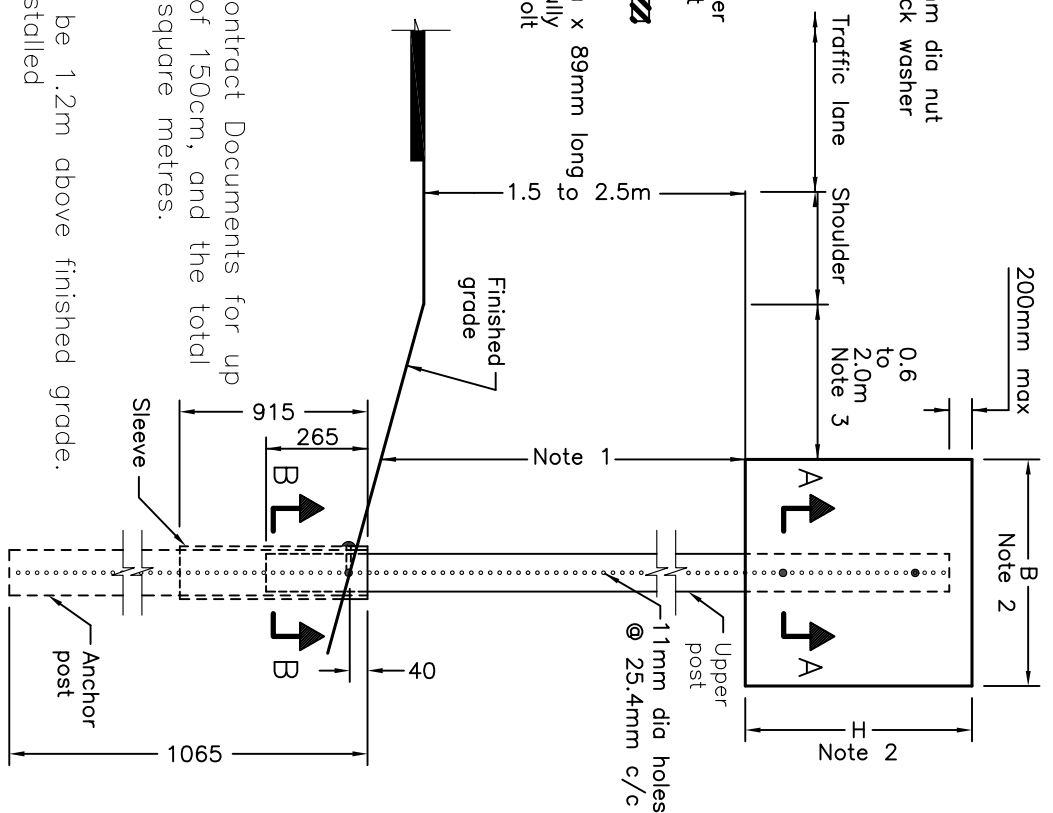


SECTION B-B



SECTION A-A



FRONT

NOTES:

- 1 Minimum vertical clearance of 2.1m shall be provided between the finished grade and the bottom of the lowest sign or tab.
- 2 This support system shall accommodate sign board sizes specified in the Contract Documents for up to maximum sign width (B) of 120cm, up to a maximum sign height (H) of 150cm, and the total sign area including tabs shall not exceed the maximum sign area of 1.44 square metres.
- 3 When curb is present, minimum 0.3m from face of the curb.
When guide rail is present, minimum 1.0m behind face of guide rail.
- A When Wa-33 is specified below a Rb-125, the bottom of the Wa-33 shall be 1.2m above finished grade.
- B The system depicted on this OPSD is a proprietary system and shall be installed according to manufacturer's specifications.
- C Posts and sleeves shall be manufactured from hot rolled carbon sheet steel, structural quality according to ASTM A 653, Grade 50 steel or ASTM A 1011, Grade 50 steel.
- D Posts and sleeves manufactured from ASTM A 653, Grade 50 steel shall be stripped prior to being hot dip galvanized.
- E Posts and sleeves shall be hot dip galvanized after fabrication. Excess zinc shall be removed to ensure telescoping of posts and sleeves.
- F System configuration meets AASHTO MASH TL-3.
- G All dimensions are in millimetres unless otherwise shown.

MINISTRY OF TRANSPORTATION ONTARIO DRAWING

December 2025

Rev 0

**SMALL SIGN SUPPORT SYSTEM
MASH SQR-LOC PERFORATED STEEL
SQUARE POST SYSTEM
INSTALLATION-SINGLE POST ASSEMBLY**

MTOD 989.120