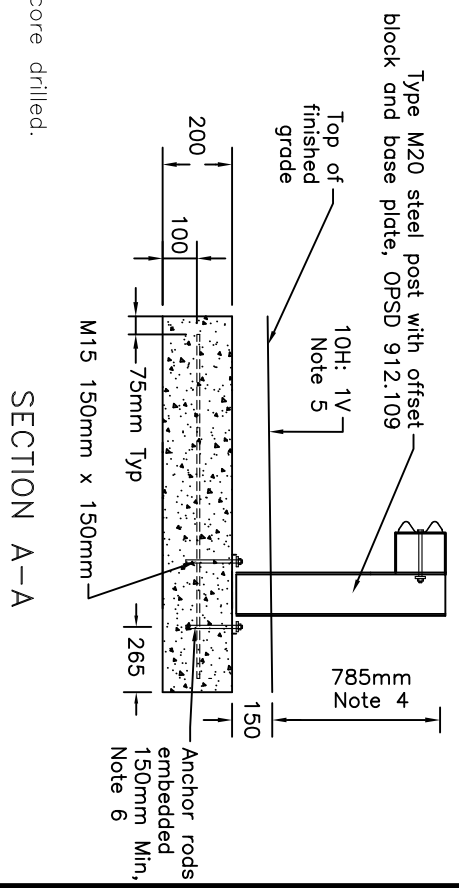


**NOTES:**

- 1 The minimum length of TL-2 or TL-3 MASH SBGR to be installed upstream and downstream of the long span treatment shall be 19.05m.
  - 2 Cast in place slabs may be continuous in the longitudinal direction. Precast slabs shall be cast as separate slabs. Lifting loop locations for precast slabs to be specified by fabricator.
  - 3 Obstacles shall not protrude more than 50mm above the finished grade.
  - 4 Mounting height to top of steel beam rail shall be measured vertically at face of rail.
  - 5 Slope shall be flatter when specified.
  - 6 Four 22mm (7/8") diameter A193 B7 Super HAS all threaded anchor rods 216mm (8 1/2") long with washer and nut installed with HiTi RE500 V3 or equivalent epoxy. Holes for anchors shall be 25mm (1") diameter diamond core drilled.
- A System configuration meets AASHTO MASH TL-3.
- B All dimensions are in millimetres unless otherwise shown.



<b>MINISTRY OF TRANSPORTATION ONTARIO DRAWING</b>  <b>GUIDE RAIL SYSTEM – STEEL BEAM</b> TYPE M – BASE PLATED ON EMBEDDED UNDERGROUND SLAB	January 2026 Rev 0  MTOD 912.251
--	---