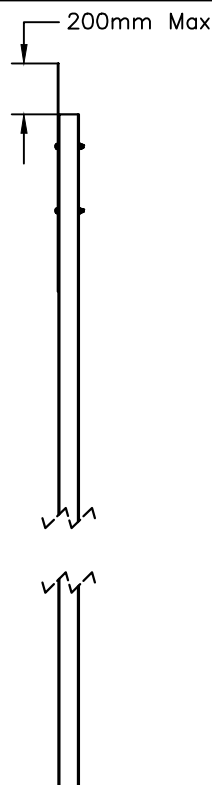
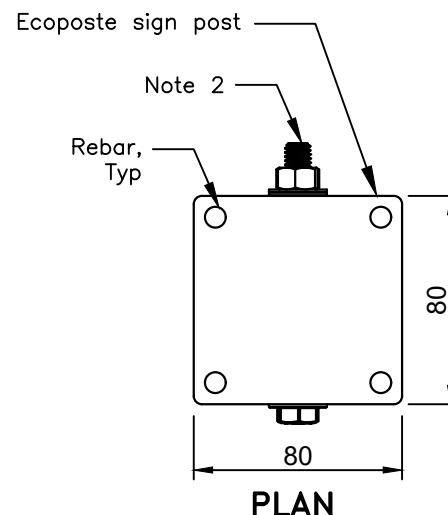


ELEVATION



PROFILE



NOTES:

- 1 The post size (kg/m) shall be selected to accommodate the sign specified in the Contract Documents so that maximum dimensions for sign (b and h) and total sign area (A) including tabs shall not exceed values in the Table 1. Post must have reinforced steel rebar to enhance rigidity of the post.
 - 2 Sign to be fastened to the post with 3/8"x4" galvanized hex bolt, 2x flat washer, and a split washer. All hardware is to be galvanized. A flat washer and split washer will be placed between the post and fastening nut. Post must be AASHTO MASH 2016 certified.
 - 3 Minimum vertical clearance of 2.1m shall be provided between the finished grade and the bottom of the lowest sign.
- A System meets AASHTO MASH TL-3.
- B All dimensions are in millimetres unless otherwise shown.

Table 1: SIGN SUPPORT REQUIREMENTS
Note 1

| MAX SIGN DIMENSIONS | | MAX SIGN AREA |
|---------------------|-----------|--------------------------|
| b mm | h mm | Note 2 m ² |
| 1200 | 900 | 0.41 |
| | 1200 | 0.90 |
| | 1800 | 1.80 |

MINISTRY OF TRANSPORTATION ONTARIO DRAWING

July 2025

Rev 0

SMALL SIGN SUPPORT SYSTEM
ECOPOSTE COLLAPSIBLE SUPPORT
INSTALLATION-SINGLE POST ASSEMBLY

DRAFT -----

MTOD 994.110