

# Contractor Performance Rating (CPR) Pilot Update

MTO-ORBA Contracts and Documents  
Subcommittee Meeting

December 3, 2024

**TIMD**  
Transportation Infrastructure  
Management Division

# Overview

1. Purpose
2. Background
3. CPR pilot findings
4. Recommendations
5. Next steps

The purpose of this presentation is to provide an update on the Contractor Performance Rating pilot (for rated contracts).

# Background for new CPR

## Why is a new CPR system required

- ORBA concerns with MTO's existing CPR system: too subjective, includes double counting, and does not consider the scope and duration of contracts.
- MTO internal review noted that the existing CPR system was too cumbersome and time consuming to complete.
- MTO and ORBA worked on a new CPR workbook, piloted in 2017 to Spring 2024.
- **Goal of CPR pilot:** was to address ORBA and MTO's concerns and look at streamlining the CPR.

## New CPR workbook (pilot):

- Conversion from subjective to objective scoring.
- Form Bs have been eliminated and replaced with a simplified referencing system.
- Simplified evaluation questions: Yes/No, Check boxes, Lists.
- Deducting points rather than adding and all contracts will start with 100 points.
- Automation of processes within CPR pilot workbook.

# CPR Scoring Comparison

Original CPR	
Attribute	Maximum Points
Quality	60
Safety	15
Timeliness	15
Contract Execution	10
<b>Total</b>	<b>100</b>

CPR Pilot	
Attribute	Maximum Points
Quality “Dollar Weighted” Items	35
QC Compliance	20
Environmental Performance & Compliance	5-10
Traffic and Safety	15
Timeliness	10
Contract Execution	15
<b>Total</b>	<b>100</b>

**TIMD**

Ministry of Transportation

Ontario 

# Pilot Results

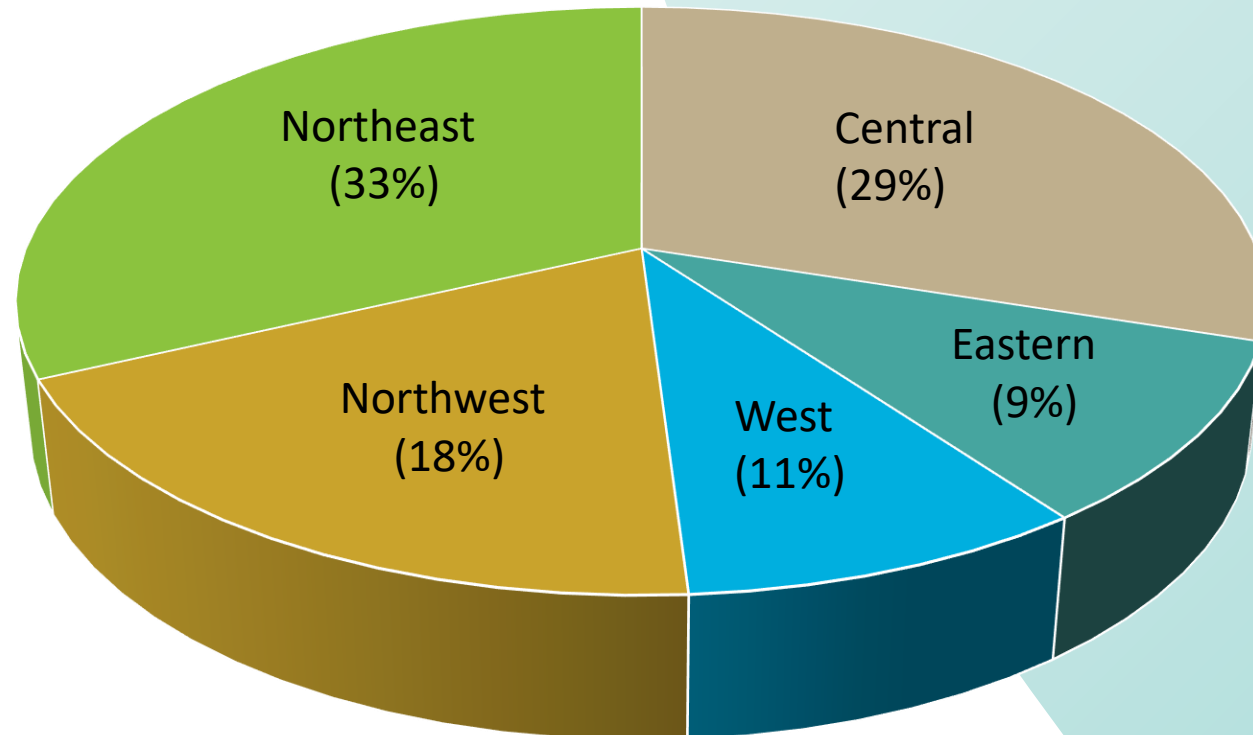


**TIMD**

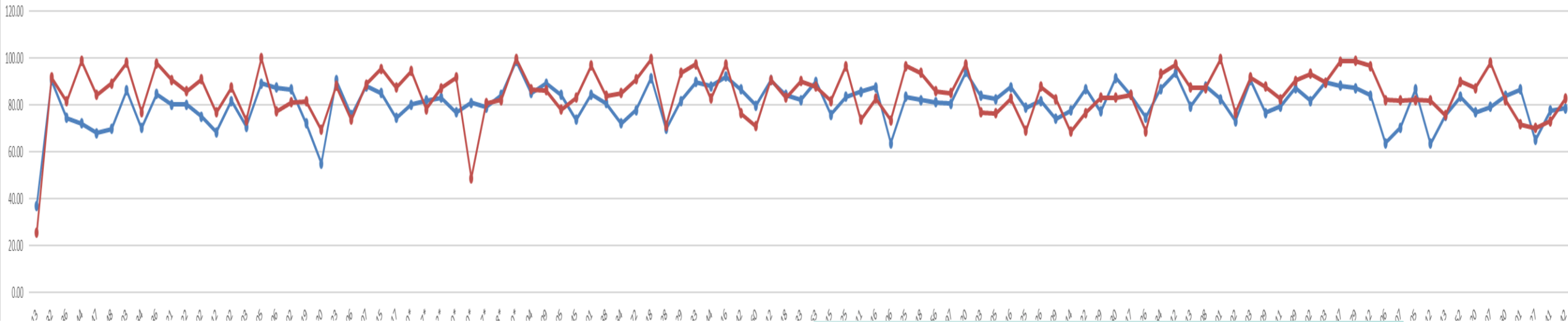
Ministry of Transportation  
Ontario 

# CPR Pilot Files Received

- Over 150 Contracts
  - All types of contracts (structural rehab/replacement, resurfacing work, culvert replacements and rehab, expansions)
  - Contract values: \$500,000 to \$70M; \$11.4M average
  - 58 contractors



# CPR Pilot Files Comparison by Year



● Original CPR     
 ● Pilot CPR Score

Year	Total Files	CPR Score Average	CPR Pilot Score Average	Difference
<b>2018/2019</b>	93	81.53	84.89	3.36%
<b>2020/2021</b>	61	80.00	83.51	3.51%
<b>Total</b>	<b>154</b>	<b>81.02</b>	<b>84.41</b>	<b>3.39%</b>

- **Pilot Standard Deviation: 10.96**
- **CPR Standard Deviation: 8.80**

# TIMD

Ministry of Transportation  
Ontario 



# Observations and Summary of Analysis

Ratings with similar numbers (CPR versus CPR pilot)

- Quality Dollar Weighted: was already objective
- QC Compliance: was already objective

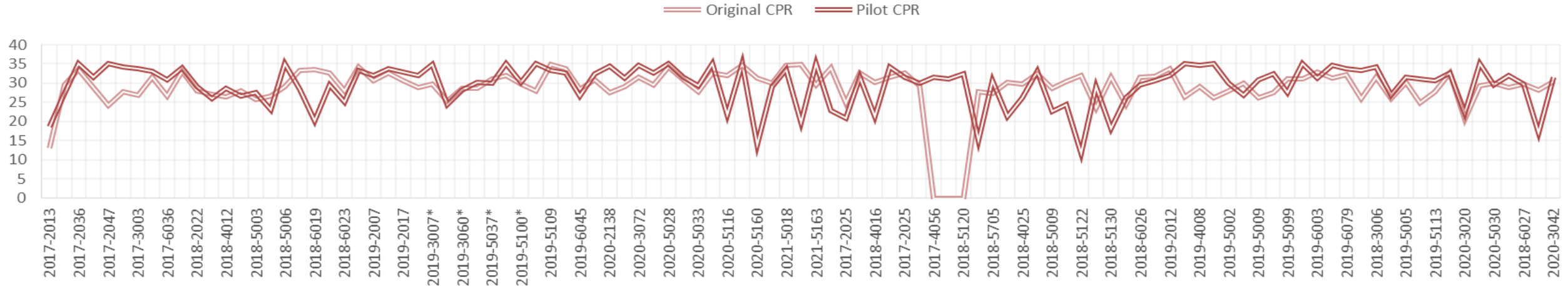
Ratings with higher gaps (CPR versus CPR pilot)

- Environmental, Contract Execution and Traffic & Safety, and Timeliness the pilot rating values are higher than the original CPR system.
  - Different scoring mechanism
  - Avoids subjectivity (drop-down menu)

Scope and Duration of Contracts

- No effect on score

# Quality – Dollar - Weighted

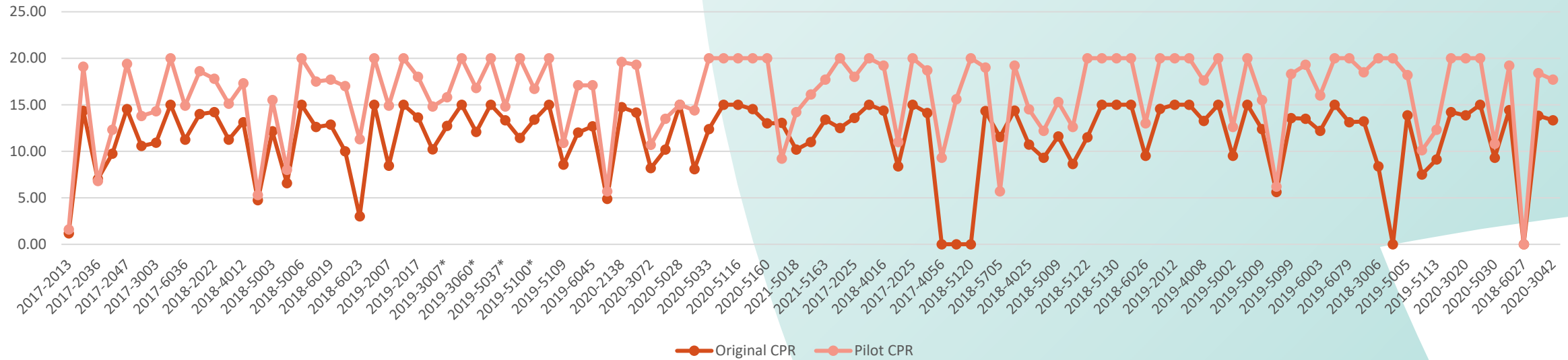


<b>AVERAGE - CPR</b>	85%
<b>AVERAGE - PILOT</b>	84%
<b>Standard Deviation - CPR</b>	3.30
<b>Standard Deviation - Pilot</b>	5.35
<b>Standard Deviation Comparison</b>	4.43
<b>MEDIAN - CPR</b>	85%
<b>MEDIAN - Pilot</b>	89%
<b>Times under 50% - CPR</b>	1
<b>Times between 50% - 80% - CPR</b>	29
<b>Times under 50% - Pilot</b>	4
<b>Times between 50% - 80% - Pilot</b>	25
<b>How many times CPR = 100%</b>	0
<b>How many times Pilot = 100%</b>	12

## Observations:

- Generally similar

# QC Compliance

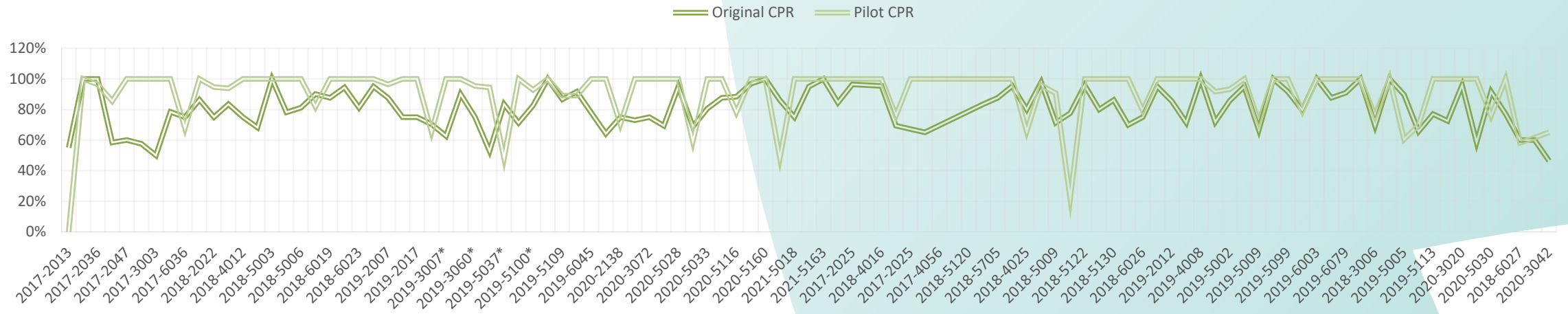


<b>AVERAGE - CPR</b>	79%
<b>AVERAGE - PILOT</b>	80%
<b>Standard Deviation - CPR</b>	0.22
<b>Standard Deviation - Pilot</b>	0.22
<b>Standard Deviation Comparison</b>	0.22
<b>MEDIAN - CPR</b>	85%
<b>MEDIAN - Pilot</b>	86%
<b>Times under 50% - CPR</b>	6
<b>Times between 50% - 80% - CPR</b>	15
<b>Times under 50% - Pilot</b>	6
<b>Times between 50% - 80% - Pilot</b>	18
<b>How many times CPR = 100%</b>	11
<b>How many times Pilot = 100%</b>	15
<b>Gaps over 10%</b>	12
<b>Gaps over 20%</b>	4

## Observations:

- Generally similar

# Environmental



<b>AVERAGE - CPR</b>	79%
<b>AVERAGE - PILOT</b>	92%
<b>Standard Deviation - CPR</b>	0.17
<b>Standard Deviation - Pilot</b>	0.18
<b>Standard Deviation Comparison</b>	0.18
<b>MEDIAN - CPR</b>	81%
<b>MEDIAN - Pilot</b>	100%
<b>Times under 50% - CPR</b>	1
<b>Times between 50% - 80% - CPR</b>	27
<b>Times under 50% - Pilot</b>	3
<b>Times between 50% - 80% - Pilot</b>	6
<b>How many times CPR = 100%</b>	6
<b>How many times Pilot = 100%</b>	6
<b>Gaps over 10%</b>	36
<b>Gaps over 20%</b>	25

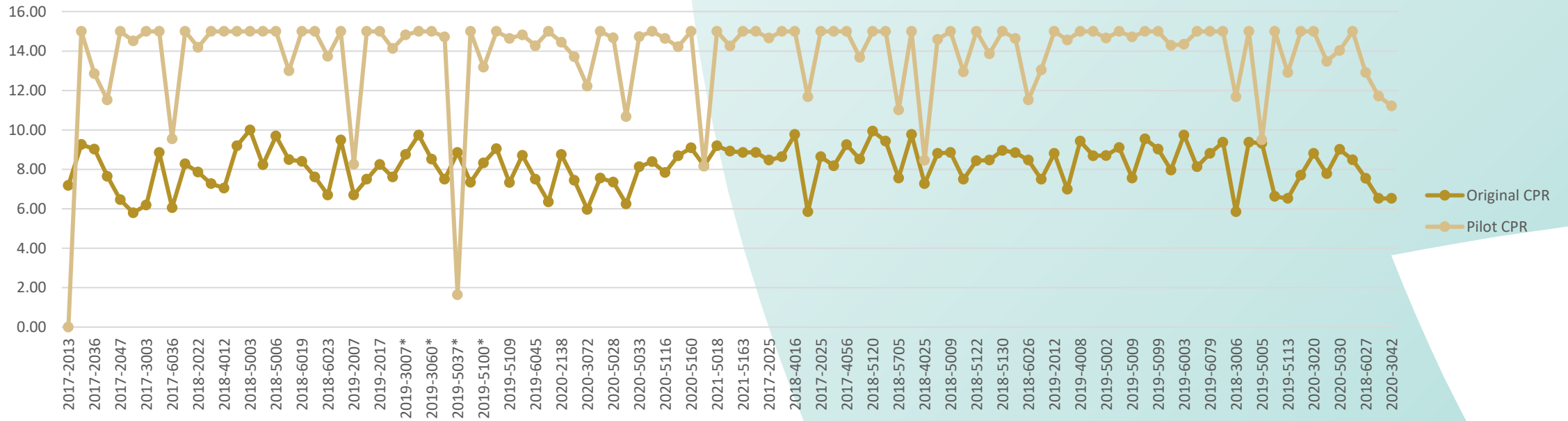
## Observations:

- Higher Values in Pilot

## Gaps:

- Current CPR system gives a rating of 2 for meeting the requirements

# Contract Execution



<b>AVERAGE - CPR</b>	77.79%
<b>AVERAGE - PILOT</b>	87.81%
<b>Standard Deviation - CPR</b>	18.18%
<b>Standard Deviation - Pilot</b>	18.18%
<b>Standard Deviation Comparison</b>	22.66%
<b>MEDIAN - CPR</b>	82.4%
<b>MEDIAN - Pilot</b>	98.8%
<b>Times under 50% - CPR</b>	2
<b>Times between 50% - 80% - CPR</b>	25
<b>Times under 50% - Pilot</b>	4
<b>Times between 50% - 80% - Pilot</b>	6
<b>How many times CPR = 100%</b>	1
<b>How many times Pilot = 100%</b>	29
<b>Gaps over 10%</b>	41
<b>Gaps over 20%</b>	21

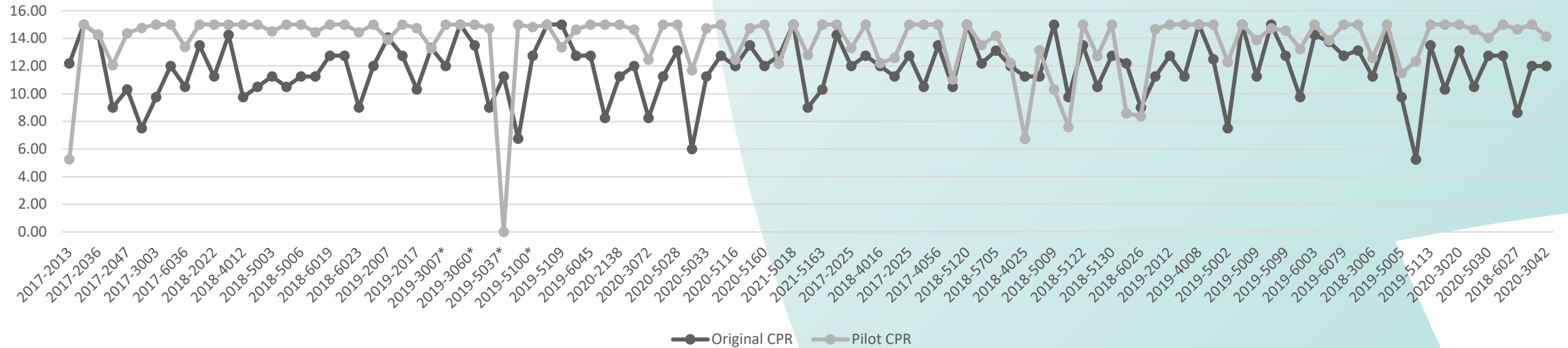
## Observations:

- Higher Values in Pilot

## Gaps:

- Current CPR system gives a rating of 2 for meeting the requirements
- Points deducted not gained, in the new system.
- No longer scoring the subjective rating categories in the new system.

# Traffic & Safety



<b>AVERAGE - CPR</b>	78%
<b>AVERAGE - PILOT</b>	95%
<b>Standard Deviation - CPR</b>	0.14
<b>Standard Deviation - Pilot</b>	0.10
<b>Standard Deviation Comparison</b>	0.15
<b>MEDIAN CPR</b>	80%
<b>MEDIAN - Pilot</b>	100%
<b>Times under 50% - CPR</b>	2
<b>Times between 50% - 80% - CPR</b>	22
<b>Times under 50% - Pilot</b>	1
<b>Times between 50% - 80% - Pilot</b>	1
<b>How many times CPR = 100%</b>	5
<b>How many times Pilot = 100%</b>	30
<b>Gaps over 10%</b>	0
<b>Gaps over 20%</b>	24

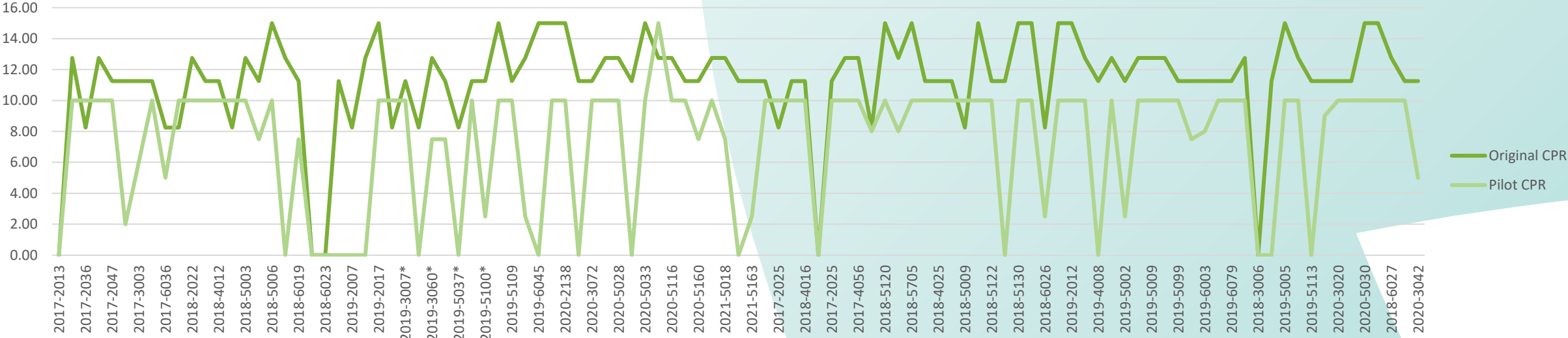
## Observations:

- Higher Values in Pilot

## Gaps:

- Current CPR system gives a rating of 2 for meeting the requirements

# Timeliness



<b>AVERAGE - CPR</b>	78.41%
<b>AVERAGE - PILOT</b>	88.75%
<b>Standard Deviation - CPR</b>	12.61
<b>Standard Deviation - Pilot</b>	12.61
<b>Standard Deviation Comparison</b>	20.69
<b>MEDIAN CPR</b>	75%
<b>MEDIAN - Pilot</b>	100%
<b>Times under 50% - CPR</b>	0
<b>Times between 50% - 80% - CPR</b>	26
<b>Times under 50% - Pilot</b>	4
<b>Times between 50% - 80% - Pilot</b>	7
<b>How many times CPR = 100%</b>	6
<b>How many times Pilot = 100%</b>	31
<b>Gaps over 10%</b>	31
<b>Gaps over 20%</b>	22

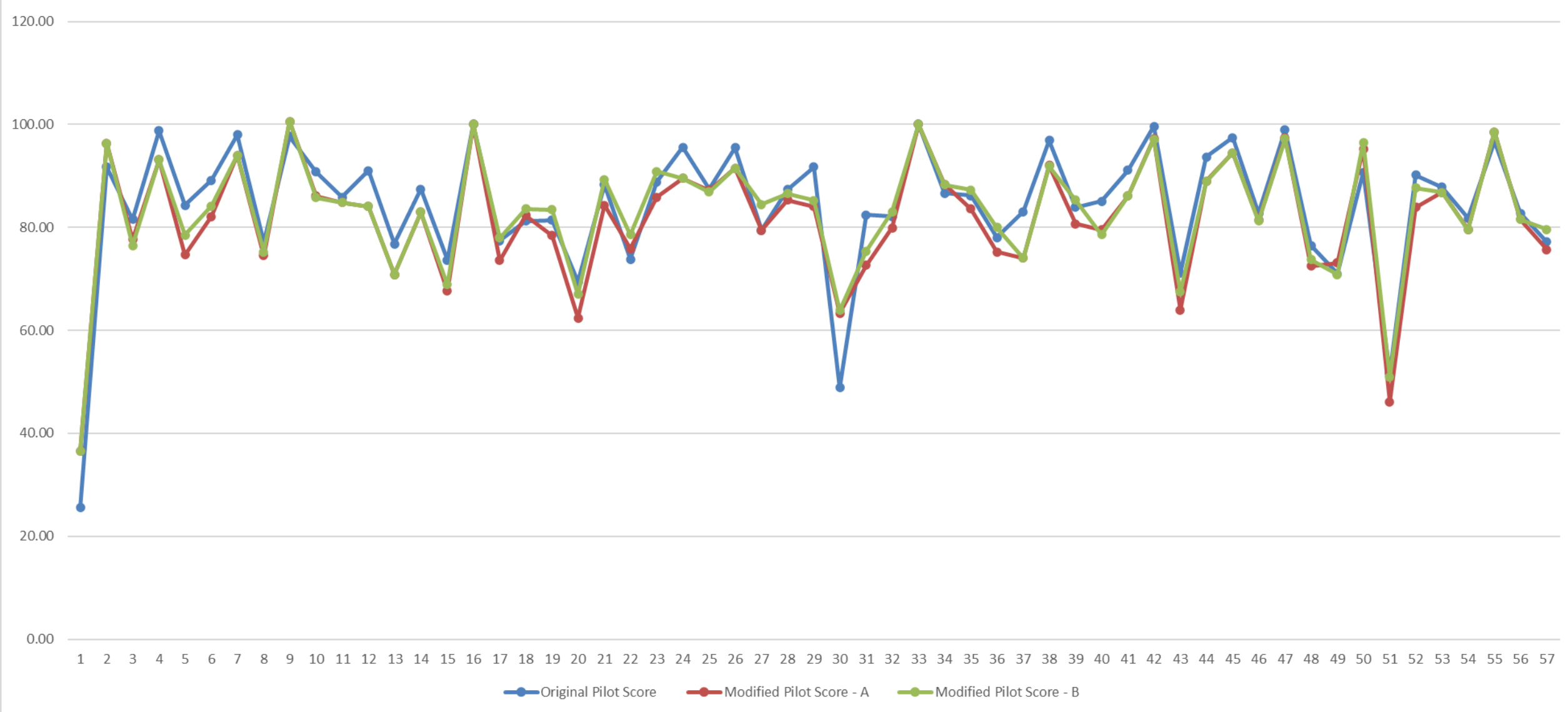
**Observations:**

- Higher Values in Pilot

**Gaps:**

- Current CPR system gives a rating of 2 for meeting the requirements
- Points deducted not gained, in the new system.
- No longer scoring the subjective rating categories in the new system.

## Comparison from Weight Changes



- **Original Pilot Score:** (35 x Dollar-Weighted) + (20 x Quality Compliance) + (5 or 10 x Environmental) + (15 x Contract Execution) + (15 x Traffic and Safety) + (10 x Timeliness)
- **Modified Pilot Score – Option A:** (35 x Dollar-Weighted) + (20 x Quality Compliance) + (5 or 10 x Environmental) + (10 x Contract Execution) + (20 x Traffic and Safety) + (10 x Timeliness)
- **Modified Pilot Score – Option B:** (35 x Dollar-Weighted) + (20 x Quality Compliance) + (5 or 10 x Environmental) + (15 x Contract Execution) + (20 x Traffic and Safety) + (5 x Timeliness)



## Wrap-up



# Recommendations

- Recommend continuing with the CPR pilot and phase out the existing CPR.
- Move away from Excel workbook and develop an app in CMS.

# Next steps

- Develop an implementation plan for the roll out.
- Looking at developing a CPR for Design Build projects.