

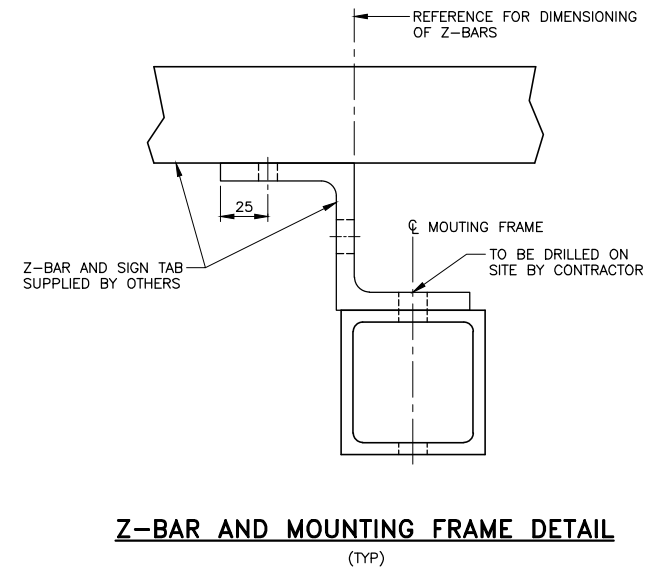
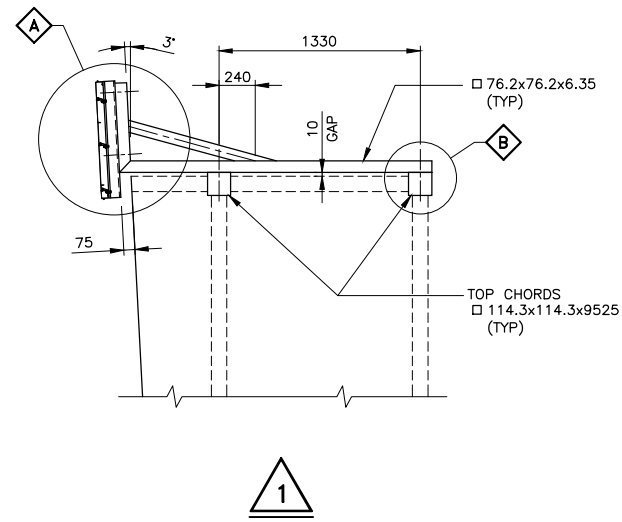
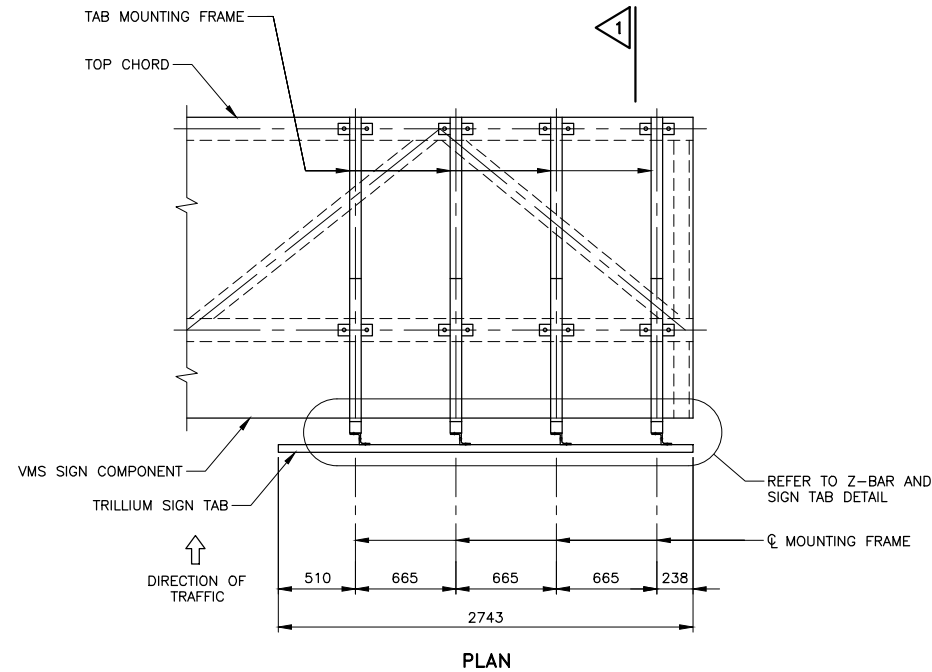
NOTES:

1. ALL ALUMINUM EXTRUDED TUBE SECTIONS SHALL BE ALLOY 6061-T6 UNLESS OTHERWISE NOTED.
2. ALUMINUM COMPONENTS MADE OF ALLOY 6061-T6.
3. ALL BOLTS, NUTS AND WASHERS SHALL BE STAINLESS STEEL AND CONFORM TO ASTM F593 ALLOY 304 WITH A MINIMUM YIELD STRENGTH OF 480 MPa AND A MINIMUM TENSILE STRENGTH OF 715 MPa.
4. ALL ALUMINUM WELDING SHALL BE DONE IN ACCORDANCE WITH THE LATEST EDITION OF CSA STANDARD W59.2-M.
5. ALL RELEVANT VMS STRUCTURE DIMENSIONS TO BE VERIFIED AT THE TIME OF MANUFACTURE OF THE SIGN.
6. THE FABRICATOR SHALL CONFIRM THE SIGN TAB Z-BAR LOCATIONS WITH MINISTRY SIGN SHOP STAFF, PRIOR TO FIXING THE TAB MOUNTING FRAME TO THE SIGN COMPONENT.
7. THIS DRAWING TO BE READ IN CONJUNCTION WITH THE GENERAL ARRANGEMENT DRAWING AND THE SIGN COMPONENT DETAIL DRAWING.
8. THE INSERTS SHALL DEVELOP THE FULL CAPACITY OF THE BOLT AND BE SUITABLE FOR DYNAMIC STRUCTURES.

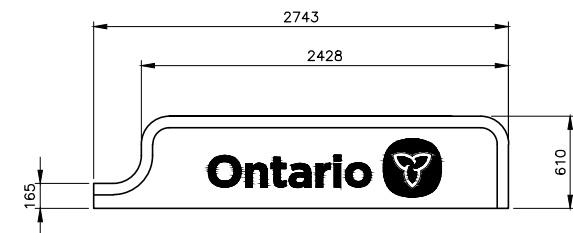
LEGEND:

- SST - DENOTES STAINLESS STEEL
□ - DENOTES ALUMINUM SQUARE TUBE

ALUMINUM TUBE SECTION	
METRIC SIZE	IMPERIAL SIZE
□76.2x76.2x6.35	□3"x3"x0.25"

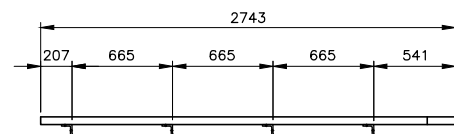


Z-BAR AND MOUNTING FRAME DETAIL



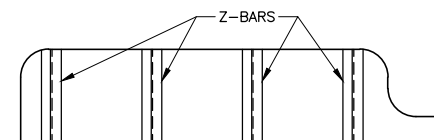
NOTE: TRILLIUM TAB LOCATED IN UPPER RIGHT CORNER OF VMS SIGN COMPONENT (SUPPLIED BY OTHERS).

TRILLIUM TAB



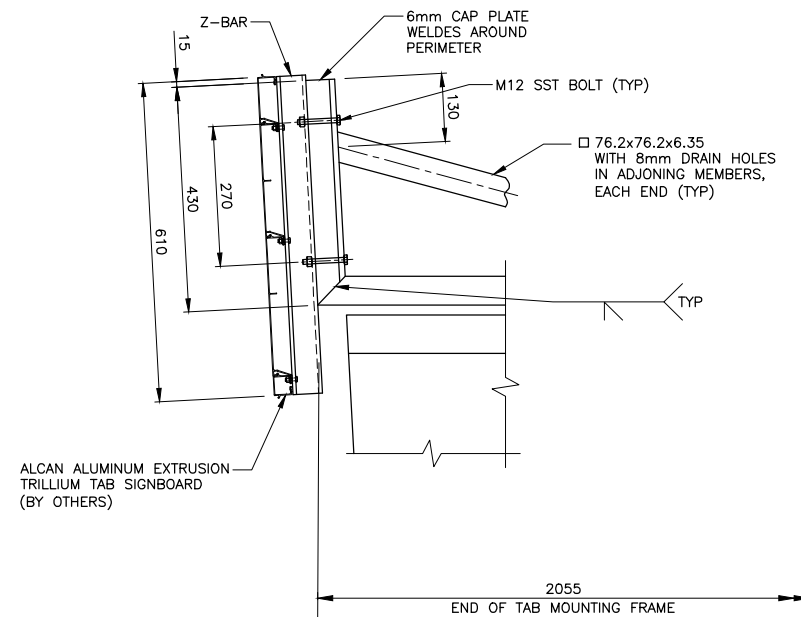
PLAN

REFERENCE FOR LOCATION OF Z-BARS (REFER TO Z-BAR AND MOUNTING FRAME DETAIL)

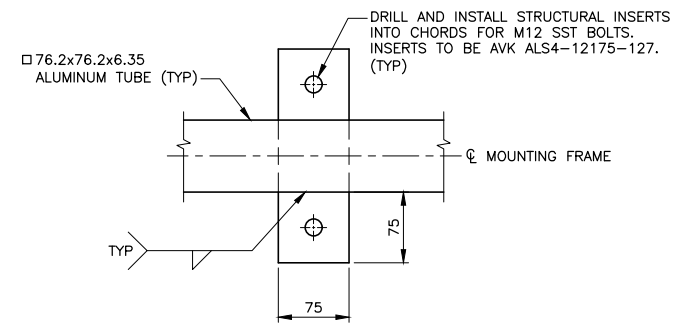


ELEVATION

Z-BAR AND SIGN TAB DETAIL

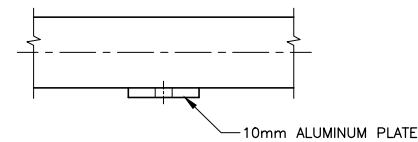


A



NOTE: TWO (2) PLACES PER FRAME (TYP)

PLAN



B ELEVATION

REFER TO THE SIGN SUPPORT MANUAL FOR PROFESSIONAL ENGINEER STAMPING REQUIREMENTS.

STANDARD DRAWING OCTOBER 31, 2024	SS118-123
VARIABLE MESSAGE TRILLIUM SIGN TAB	

REVISIONS	DATE	BY	DESCRIPTION
DESIGN	-	CHK	-
DRAWN	-	CHK	-