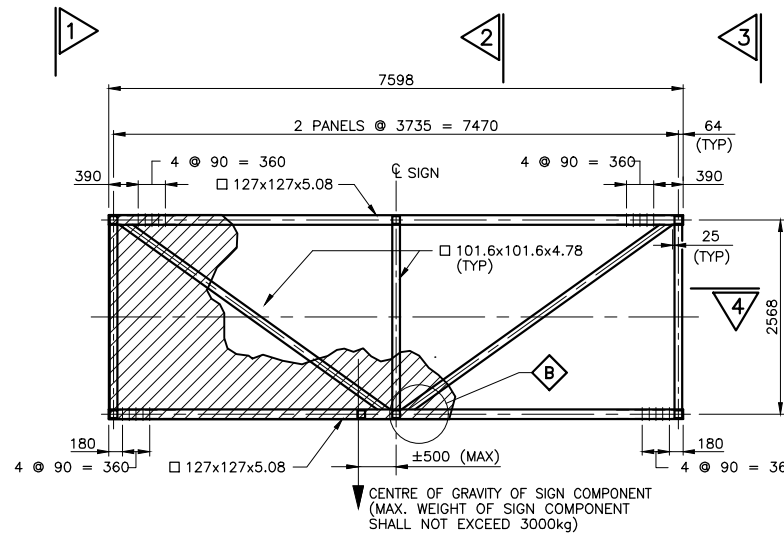
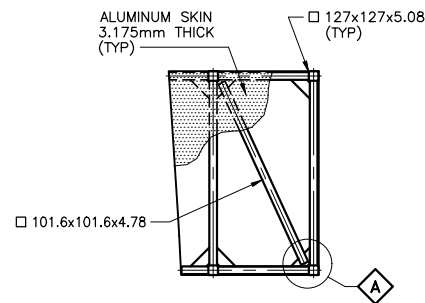
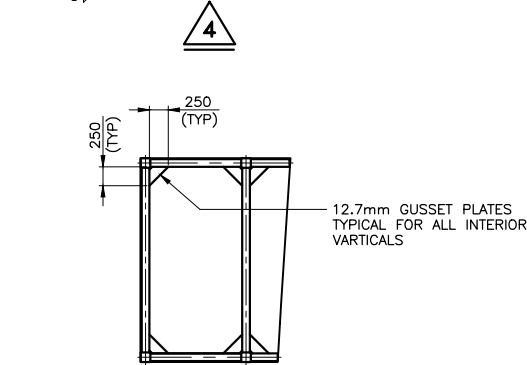
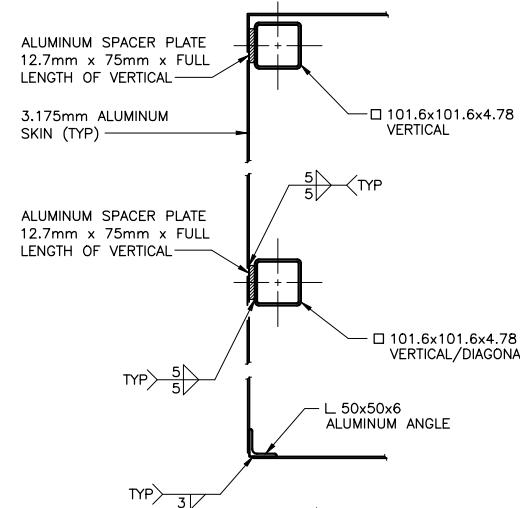
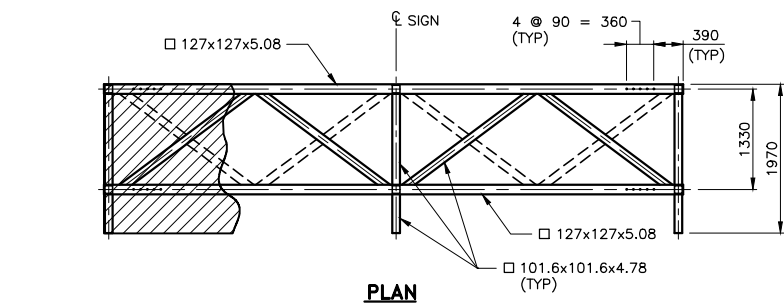
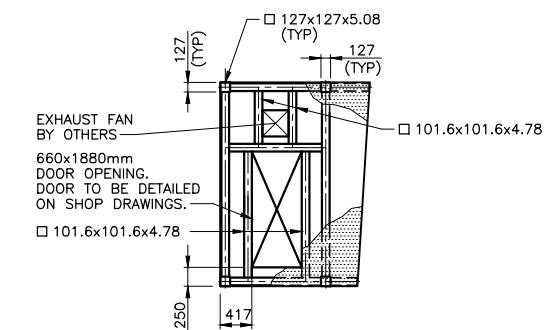
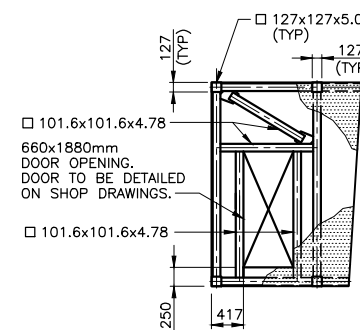
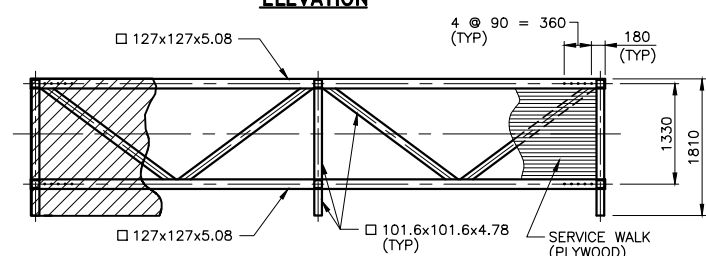


NOTES:

1. TOLERANCE SHALL BE ± 1mm UNLESS OTHERWISE SPECIFIED.
2. NAMEPLATE STATING FABRICATOR'S IDENTITY AND DATE OF FABRICATION SHALL BE ATTACHED FACING INWARD TO BOTH MAIN CHORDS DIAGONALLY OPPOSITE.
3. THIS STANDARD TO BE READ IN CONJUNCTION WITH SS118-120 (VMS - GENERAL ARRANGEMENT), SS118-121 (VMS - END COMPONENT - DETAILS), AND SS118-123 (VARIABLE MESSAGE TRILLIUM SIGN TAB).
4. NO SHOP SPLICES IN ANY MEMBER.
5. LEGEND: □ - DENOTES ALUMINUM SQUARE TUBE

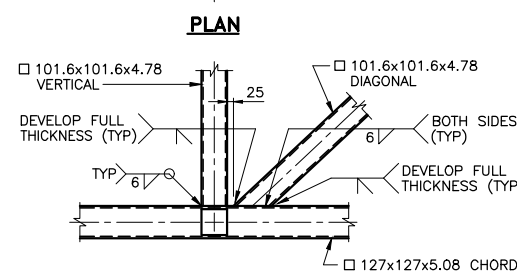
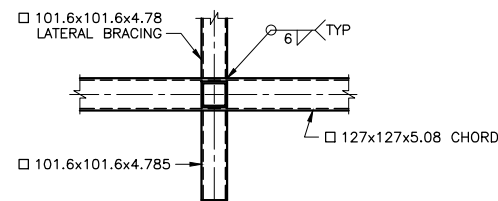
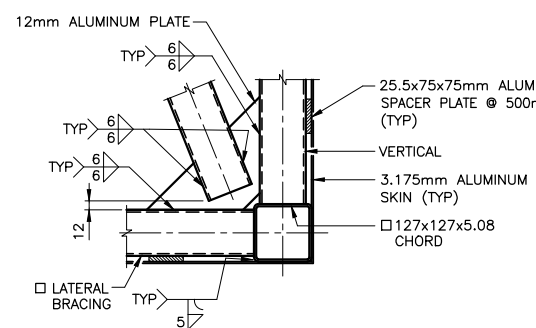


2 TYPICAL INTERIOR SECTION

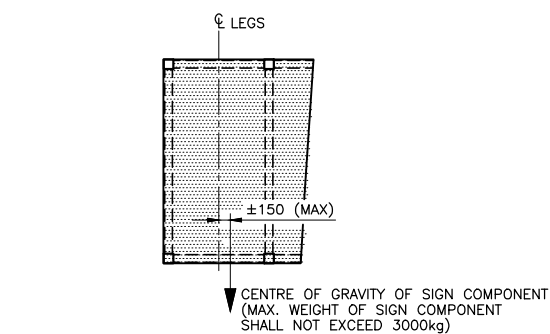


3 END OF SIGN COMPONENT WITH DOOR

END OF SIGN COMPONENT WITH DOOR AND EXHAUST FAN



3 END OF SIGN COMPONENT WITH DOOR



REFER TO THE SIGN SUPPORT MANUAL FOR PROFESSIONAL ENGINEER STAMPING REQUIREMENTS.

STANDARD DRAWING OCTOBER 31, 2024 SS118-122

MID-SIZE VARIABLE MESSAGE SIGN (VMS) SUPPORT STRUCTURE SIGN COMPONENT DETAILS

REVISIONS	DATE	BY	DESCRIPTION
DESIGN	-	CHK	-
DRAWN	-	CHK	-
		CODE	CSA-S6-19
		LOAD	-
		DATE	-
		SITE	-
		DWG	-