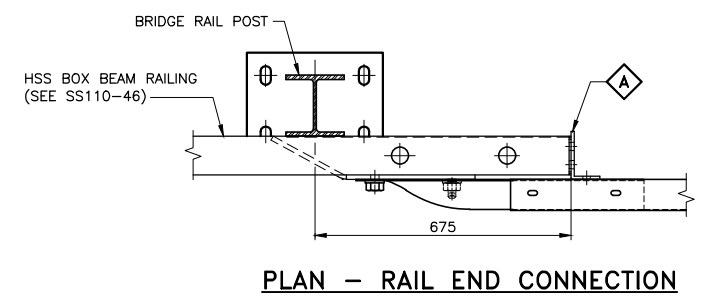
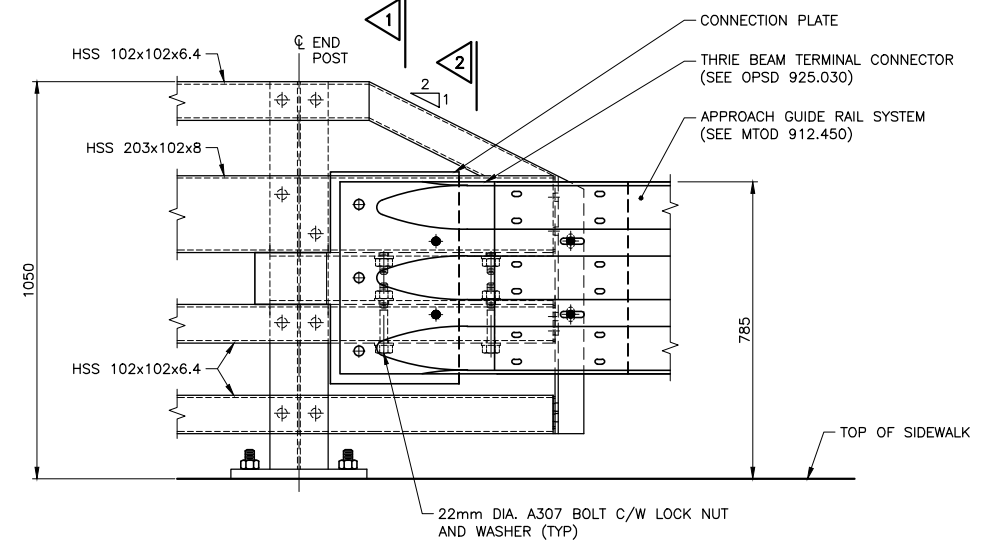


NOTES:

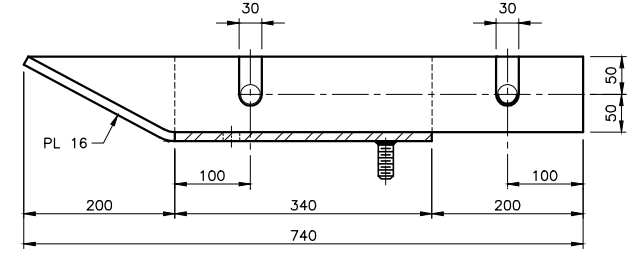
1. SYSTEM CONFIGURATION MEETS THE REQUIREMENTS OF NCHRP 350.
2. THIS DRAWING TO BE READ IN CONJUNCTION WITH SS110-46.
3. STEEL PLATES SHALL BE GRADE 350WT.
4. FULL THREAD STUDS FOR FASTENING GUIDE RAILS TO POST SHALL CONFORM TO ASTM A108. LOCK NUTS SHALL BE ACCORDING TO ASTM A563. WASHERS SHALL BE ACCORDING TO ASTM F436.
5. ALL COMPONENTS OF RAILING SHALL BE HOT-DIP GALVANIZED AFTER FABRICATION.
6. BOLTS, PLATES, NUT AND WASHERS SHALL BE HOT-DIP GALVANIZED. LOCK NUTS SHALL BE ZINC PLATED ACCORDING TO ASTM B695.
7. DAMAGE TO GALVANIZED SHALL BE REPAIRED WITH A ZINC TOUCH-UP SOLDER, GALVAGUARD OR APPROVED EQUIVALENT.
8. PRIOR TO ASSEMBLY, APPLY LOCTITE 242, OR APPROVED EQUIVALENT THREAD-LOCKING FLUID, TO THE BOLT THREADS AT THE NUT ENGAGEMENT AREA, PER MANUFACTURER'S SPECIFICATION.



PLAN - RAIL END CONNECTION

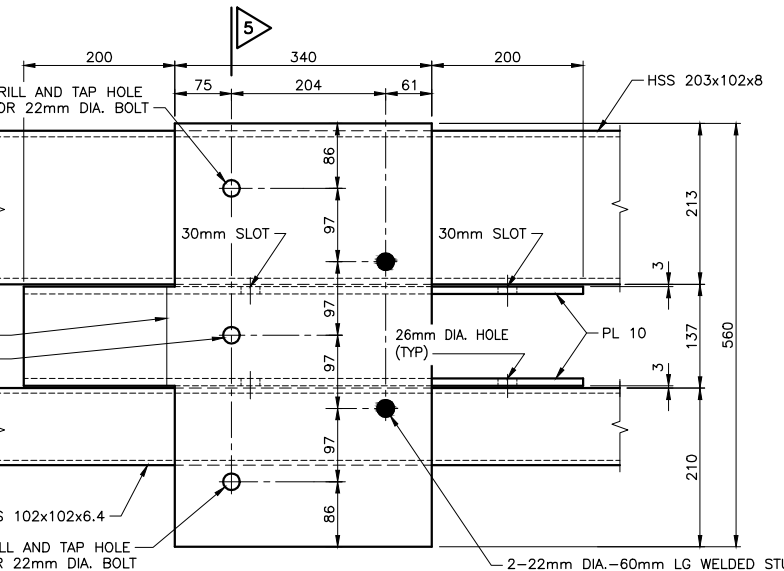


ELEVATION - RAIL END CONNECTION
(INSIDE FACE SHOWN)

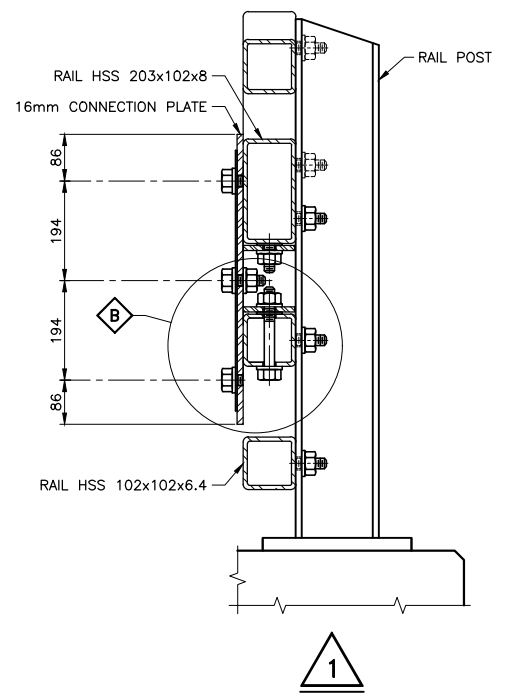


4

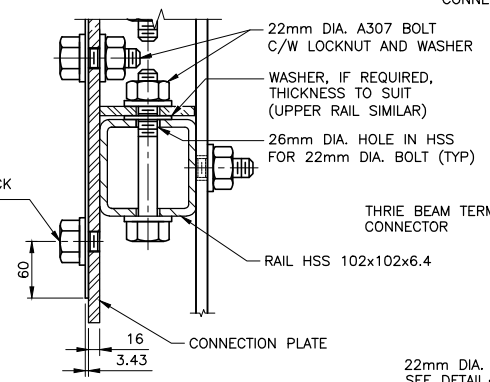
NOTE: HSS NOT SHOWN



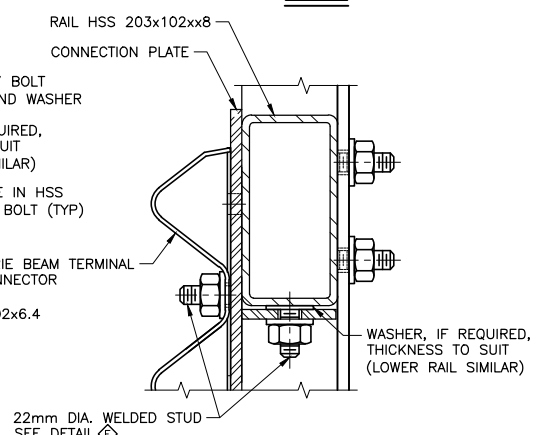
CONNECTION PLATE



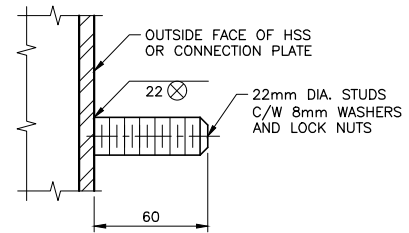
1



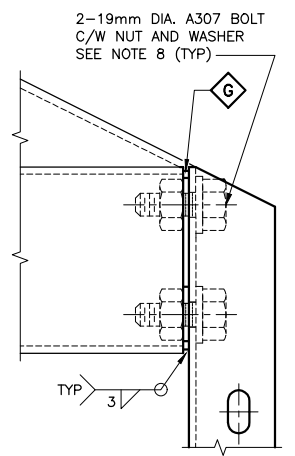
B LOWER RAIL DETAIL



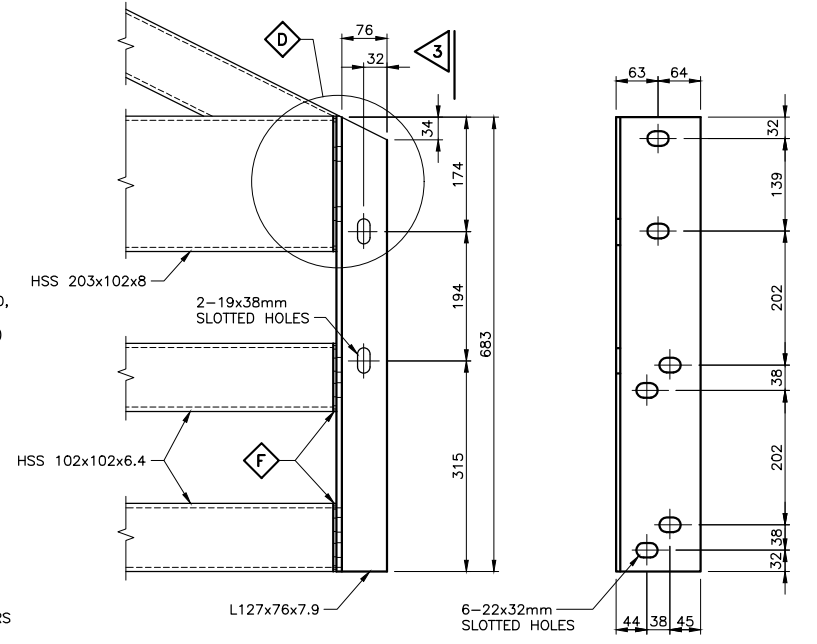
C UPPER RAIL DETAIL



E WELDED STUD DETAIL
FULL-THREAD WELDED STUD



D

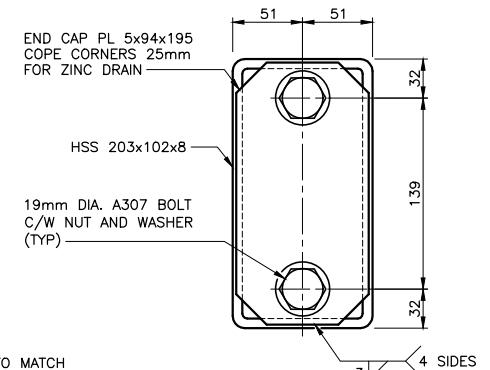


A CONNECTION ANGLE DETAIL

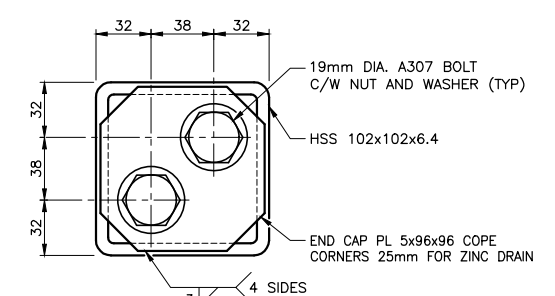
3

REFER TO THE STRUCTURAL MANUAL FOR PROFESSIONAL ENGINEER STAMPING REQUIREMENTS.

STANDARD DRAWING
JUNE 5, 2024
SS110-47
END CONNECTION FOR FOUR TUBE CURB RAILING AND APPROACH RAIL TRANSITION



F END CAP
CONNECTION ANGLE NOT SHOWN



G END CAP
CONNECTION ANGLE NOT SHOWN

REVISIONS	DATE	BY	DESCRIPTION

DESIGN	-CHK	-CODE	CSA-S6-19	LOAD	-DATE	-
DRAWN	-CHK	-SITE	-	-	DWG	-

FILE NAME: C:\USERS\WZAKY\ONEDRIVE - GOVERNMENT OF ONTARIO\DESKTOP\ADAM JAN RAILING 2023\SS110-47 MAY 30 2024.DWG
MODIFIED: 2024-06-05 09:04