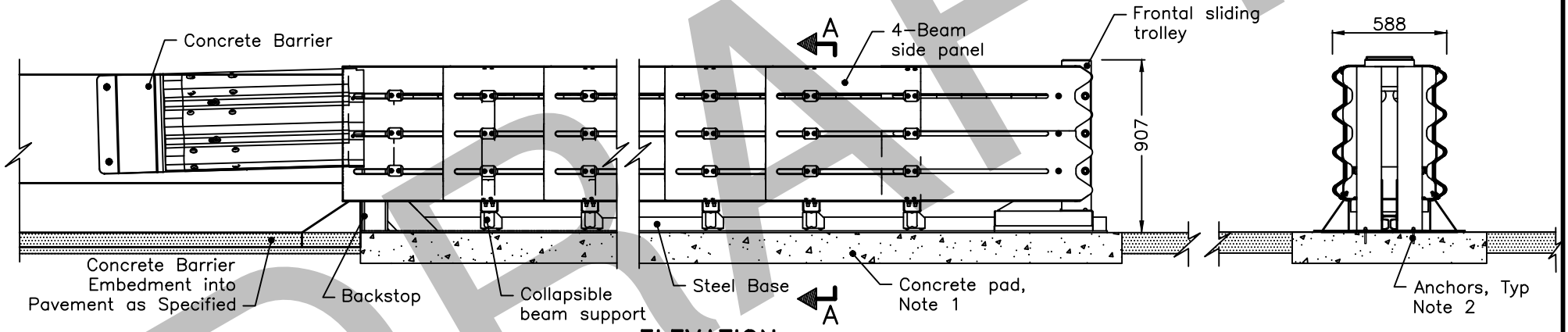


PLAN



ELEVATION

SECTION A-A

NOTES:

- 1 The system shall be anchored to a concrete pad according to OPSD 923.001.
- 2 Anchors shall be according to the manufacturer's specifications.
- A Delineation shall be according to OPSD 984.203.
- B The system depicted here is a proprietary product.
- C System configuration meets AASHTO MASH TL-3.
- D All dimensions are in millimetres unless otherwise shown.

MINISTRY OF TRANSPORTATION ONTARIO DRAWING				Date	Sep 2023	Rev	0
<b>ENERGY ATTENUATOR, CRASH CUSHION HERCULES SYSTEM INSTALLATION – PERMANENT BI-DIRECTIONAL</b>				-----			
				-----			
				<b>MTOD 923.504</b>			