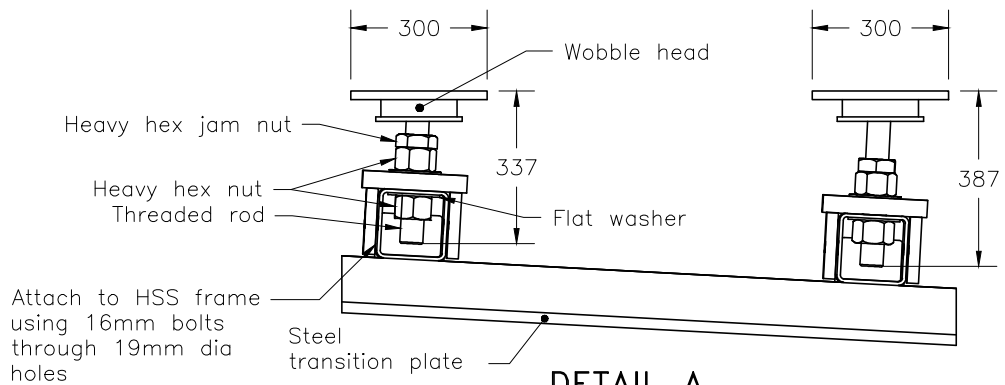


ELEVATION

- NOTES:**
- 1 Connect barrier cap to Type X barrier using threaded rod through cup washer 1 on traffic side and cup washer 2 on barrier side.
 - 2 Anchors may be steel pin according to OPSD 911.341 or B7 anchored rods inserted through proprietary ReDD inserts according to MTOD 911.220.
- A This MTOD shows left shoulder installation. The temporary transition barrier shall be inverted for right shoulder installation.
- B System configuration meets AASHTO MASH TL-3.
- C This MTOD shall be read in conjunction with OPSD 911.335, 911.336, 911.337, 911.338, 911.339, 911.341, and 911.342.
- D All dimensions are in millimetres unless otherwise shown.



**DETAIL A
PROPRIETARY JACK SCREW AND BALL JOINT WOBBLE PLATE**

MINISTRY OF TRANSPORTATION ONTARIO DRAWING	Oct 2022	Rev	1
GUIDE RAIL SYSTEM, CONCRETE BARRIER TEMPORARY TRANSITION BARRIER INSTALLATION		-----	

		MTOD 911.331	