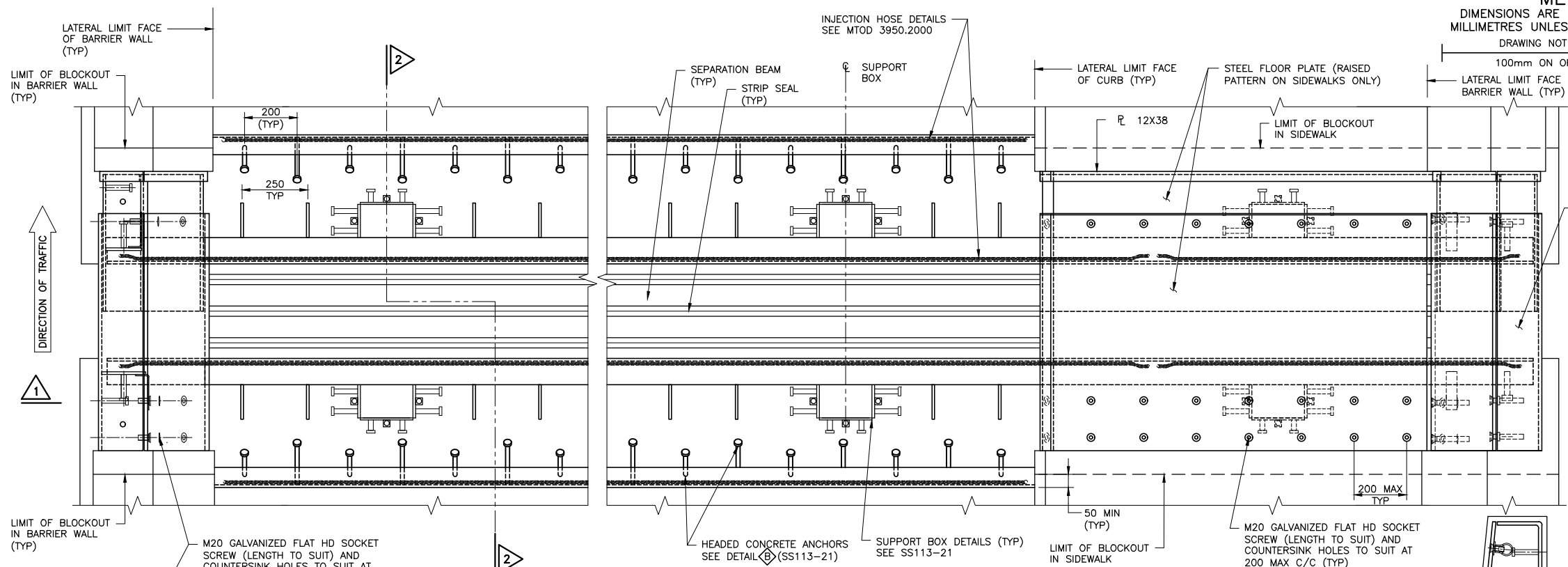
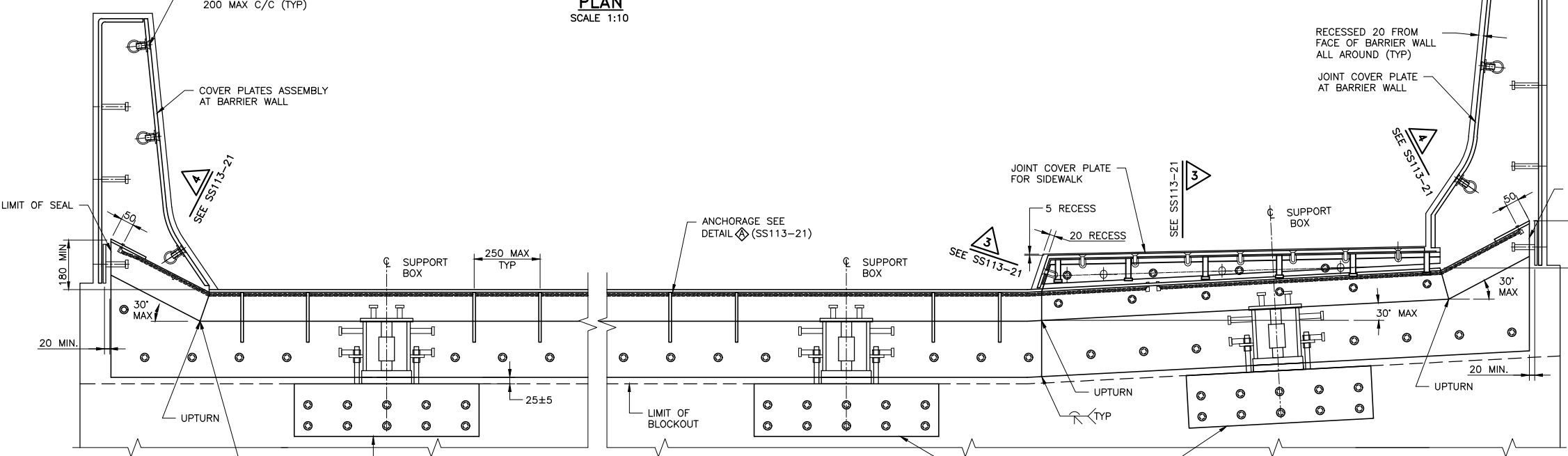


METRIC
DIMENSIONS ARE IN METRES AND/OR
MILLIMETRES UNLESS OTHERWISE SHOWN
DRAWING NOT TO BE SCALED

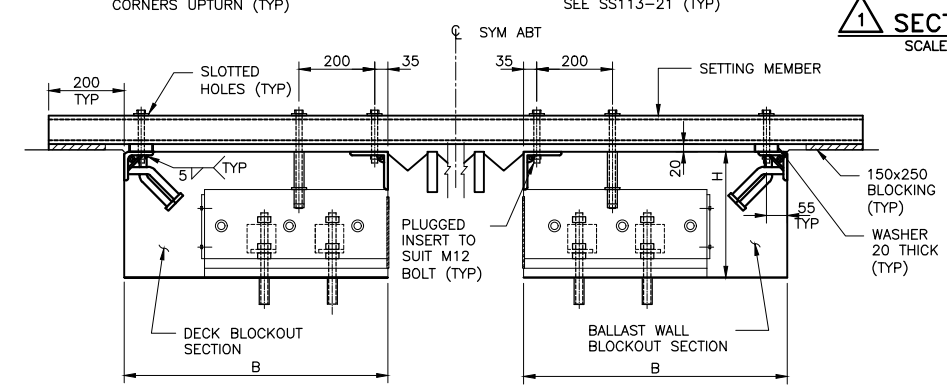
100mm ON ORIGINAL DRAWING



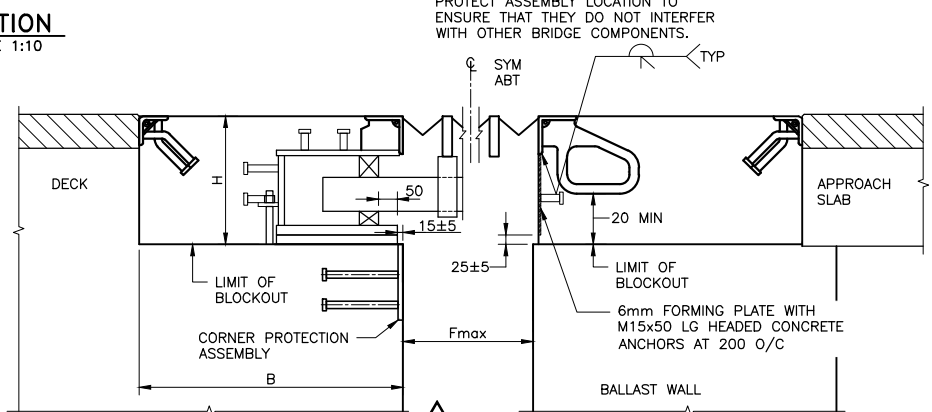
PLAN SCALE 1:10



SECTION 1 SCALE 1:10



SETTING DEVICE AND BLOCKOUTS SCALE 1:10



SECTION 2 SCALE 1:10

NOTES TO DESIGNER:
1. $F_{max} = 250mm + \Delta_{max}$
 Δ_{max} = MAXIMUM MOVEMENT DUE TO TEMPERATURE FALL FROM 15°C + CREEP AND SHRINKAGE WHERE APPLICABLE
2. THE 'NOTES TO DESIGNER' SHALL BE DELETED FROM THIS DRAWING PRIOR TO ISSUING OF CONTRACT

REFER TO IN THE STRUCTURAL MANUAL FOR PROFESSIONAL ENGINEER STAMPING REQUIREMENTS

NOTES:

- EXPANSION JOINT SHALL BE IN ACCORDANCE WITH THE DESIGNATED SOURCE FOR MATERIALS LIST DSM 9.40.20 AND SHALL HAVE A RATED TOTAL MOVEMENT CAPACITY OF ___mm.
- EXPANSION JOINT ASSEMBLY CONSTRUCTION AND MATERIAL SHALL BE ACCORDING TO OPSS 920 AND OPSS 1210, AND AS SPECIFIED IN THE CONTRACT DOCUMENTS.
- STEEL PLATE 10mm THICK UNLESS OTHERWISE NOTED.
- PREFORMED SEALS SHALL HAVE MINIMUM THICKNESS OF 5mm OR AS PER DSM 9.40.20.
- PREFORMED SEALS SHALL BE INSTALLED AFTER JOINT ASSEMBLY HAS BEEN CAST IN PLACE, STYROFOAM OR FILLER BETWEEN DECK AND BALLAST WALL REMOVED, AND EXPANSION GAP CLEARED OF ANY DEBRIS.
- ALL STEEL RETAINER SURFACES COMING IN CONTACT WITH PREFORMED SEAL SHALL BE CLEANED PRIOR TO INSTALLATION OF THE SEAL.
- FOR SKEWED STRUCTURE, WORKING DRAWINGS SHALL BE DETAILED TO SUIT GEOMETRY OF STRUCTURE.
- SETTING CHANNELS SHALL BE FLAME CUT ACCORDING TO OPSS 920, BUT IN NO CASE PRIOR TO CONCRETE REACHING INITIAL SET.
- AFTER CURING OF THE CONCRETE HAS BEEN COMPLETED, THE SETTING DEVICES MAY BE REMOVED. THE VOIDS UNDER THE ARMOURING SHALL THEN BE PRESSURE INJECTED.
- RAISED MEDIANS ON STRUCTURES SHALL BE PROVIDED WITH SLIDING PLATES. PLATE THICKNESS AND ANCHORAGES SHALL CONFORM TO SIDEWALK DETAILS, AND SHALL ACCOMMODATE INSTALLATION OF SEALS.
- THE USE OF HOLLOW SEPARATION BEAMS IS NOT PERMITTED. SHOP SPlicing OF SEPARATION BEAM IS PERMITTED ONLY AT ROADWAY CROWN, UPTURNS AND AT ONE ADDITIONAL LOCATION BETWEEN THE CROWN AND THE UPTURN. SHOP SLICES BETWEEN THE UPTURNS SHALL BE FULL STRENGTH.
- ENDS OF BOX SEAL SHALL BE SEALED WITH BITUTHENE PREFORMED SHEET TO PREVENT ENTRANCE OF WATER OR FOREIGN MATTER.
- FOR POST-TENSIONED CONCRETE BRIDGES, JOINT ASSEMBLY SHALL NOT BE INSTALLED UNTIL AT LEAST ___DAYS AFTER COMPLETION OF POST-TENSIONING OPERATIONS.
- THIS DRAWING TO BE READ IN CONJUNCTION WITH DRAWINGS SS113-21, SS113-22 AND MTD 3950.2000.

TABLE OF DESIGN REQUIREMENTS

EXP. JOINT LOCATION	DESIGN ** MOVEMENT (mm)	* DIMENSION (mm)		F max (mm)
		B	H	

* DIMENSIONS MEASURED PERPENDICULAR TO CENTRELINE EXPANSION JOINT. WHERE DIMENSIONS REQUIRED FOR JOINT SUPPLIED DIFFERS FROM THAT SHOWN IN TABLE, DIMENSION SHALL BE REVISED BY CONTRACTOR AND SHOWN ON SHOP DRAWINGS.
** CALCULATED TOTAL MOVEMENT @ SLS OCCURRING AFTER TIME OF JOINT INSTALLATION (MEASURED PARALLEL TO CENTELINE OF STRUCTURE)

NUMBER OF SEALS	3	4	5	6	7	8
"B" mm	675	760	835	915	995	1075
"H" mm(MIN)	355	355	355	380	380	380

STANDARD DRAWING AUGUST 2022 SS113-0020
MODULAR EXPANSION JOINT WITH INJECTION HOSE SYSTEM ASSEMBLY

REVISIONS	DATE	BY	DESCRIPTION

DESIGN	CHK	CODE	LOAD	DATE
DRAWN	CHK	SITE	-	DWG

FILE NAME: C:\Users\WangMa2\OneDrive - Government of Ontario\Desktop\Chris\SS113\SS113-20_SS 0113.0020.dwg
 MODIFIED: 2022-08-04 10:22